



Lockwell FS 20 Firestop Compound



Application

Lockwell FS 20 Firestop Compound is used to provide a fire rated seal around service penetrations in fire rated walls and floors. Tested in accordance with BS 476:Part 22, Lockwell FS20 Firestop Compound provides up to 6 hours fire protection.

General benefits:

- Smoke seal
- Good acoustic insulation
- Simple installation
- Load bearing seal
- Suitable to make good around most types of service penetrations
- Unaffected by humidity
- Maintenance free
- No smoke emission



Fire Rating

Fire Rating	Thickness of Mortar
1-2 Hours	75mm
3-6 Hours	100mm



Acoustic

Thickness of Mortar	Weighted Sound Reduction Index (Rw)
50mm	39dB
100mm	46dB
150mm	51dB

Description

Lockwell FS 20 Firestop Compound is a specially formulated gypsum based mortar, which is mixed with water to be trowelled or poured around service penetrations. Plastic pipework must be protected with either Firestop Collars or Intumescent Pipe Wraps (see data sheets).

In floors, permanent formwork panel (50mm) is cut and friction fitted between services and the edges of the floor slab. Lockwell FS 20 Firestop compound is then trowelled over the formwork to a depth of 25mm thick. This is allowed to harden. Lockwell FS 20 Firestop Compound is then mixed to a pouring grade and tops the seal up to the required depth.

In walls, Lockwell FS 20 Firestop Compound is mixed into a stiff consistency for trowelling into smaller openings. In larger openings, Lockwell FS 20 Firestop Compound can be cast into blocks which can be built into walls.

Coverage

Thickness of Mortar	Number of Bags per m ²
75mm	3.15
100mm	4.2
150mm	6.3

These are approximate calculations based on 22kg bags. The coverage does not take into account the percentage of the hole filled with services.

Specification

Install Lockwell FS 20 Firestop Compound to provide 1,2,3 or 4 hour fire rating to all service penetrations through all fire rated walls and floors. Installation to be fully in accordance with manufacturer's instructions.

FIRE RATINGS



Tested to BS 476:Part 22



TECHNICAL INFORMATION

You can request from our technical sales office the following information:

- Material Safety Data Sheets
- Installation Instructions
- Product Certification



Lockwell FS 20 Firestop Compound

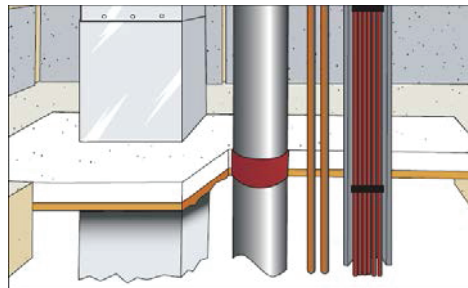
Load Bearing Fire Seals

Thickness of Mortar	Load Bearing Area Free of Services
75mm	500 x 500mm *
100mm	750 x 750mm *

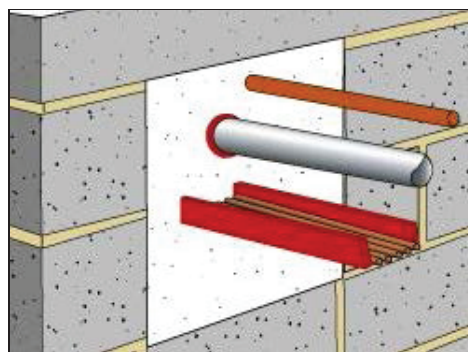
The open area free of services: thickness of seal ratios for non-reinforced seals given above, allow an ample safety margin for normal foot traffic e.g. loads of two men plus equipment with a combined weight of up to 200kg.

Lockwell FS 20 Firestop Compound sets in 30-45 minutes and is capable of accommodating foot traffic in approximately 72 hours.

* As a further safety margin, we would recommend that all floor seals with clear areas greater than in the above table must be reinforced. Please contact our technical department for details.



Lockwell FS 20 Firestop Compound poured onto permanent mineral fibre shutter in floor



Lockwell FS 20 Firestop Compound trowelled into wall

ORDERING

When ordering this product you will need the following information:

- Size of opening
- Details of service penetrations
- Fire rating
- Quantity required

Please order from our technical sales office.

www.lockwellsystems.com
LOCKWELL SYSTEMS LLC
10028, West Road, Houston,
Texas, USA
P: +281-807-6111
F: +281-807-6277

Asia Hotline: +662 181 9738
Email: contact@lockwellsystems.com